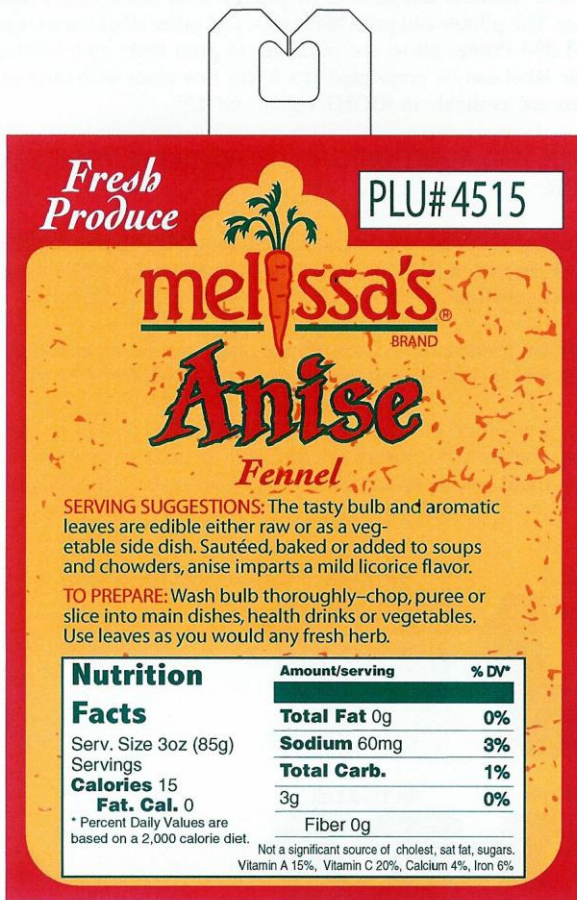


# HAND APPLIED CLOSURE-LABELS

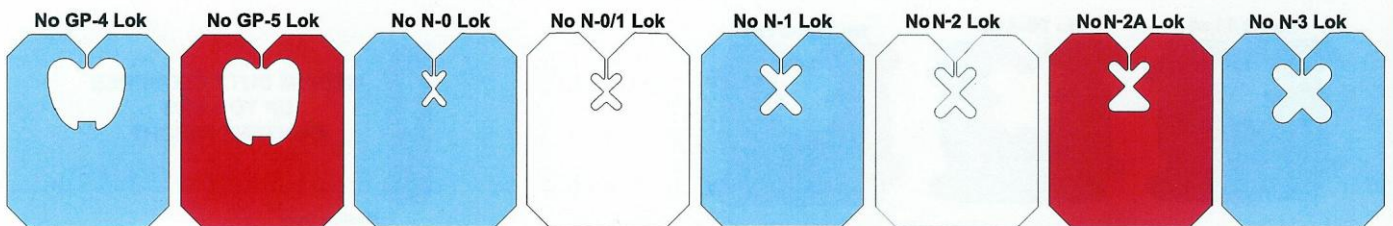
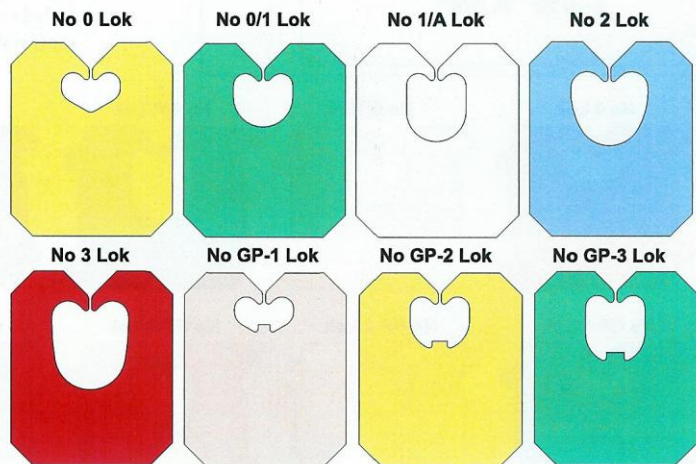
## Series U34



The Series U34 Label can be printed in any number of colors on one or both sides. The label can be printed on our standard C1S Tagboard (10 pt, white), or a synthetic label material.

SEE APPENDIX FOR ADDITIONAL CLOSURE-LABEL PRINTING INFORMATION.

Labels are shipped on rolls containing 1,000 labels and in cartons of 9,000 (9 rolls). Labels can be used to close plastic bags (film or net) and are also used as tags for bunched vegetables. Labels glued to medium duty closures are available in seven plastic colors. Labels glued to heavy duty closures are available in three plastic colors. The minimum order quantity is 9,000.



Heavy Duty plastic recommended for net bag closures



RB-2 Lok designed for rubber bands.



**MEDIUM DUTY CLOSURES  
UP TO 5 LBS  
CONTENT WEIGHT**

Medium Duty  
0.030"



**HEAVY DUTY CLOSURES  
UP TO 10 LBS  
CONTENT WEIGHT**

Heavy Duty  
0.045"

### SPECIFICATIONS

Label Size: ..... 3" wide x 4" long  
 Plastic Thickness:  
 Medium Duty: ..... 0.030"  
 Heavy Duty: ..... 0.045"  
 Lok Opening Sizes: ..... 0, 0/1, 1/A, 2, 3, GP-1, GP-2, GP-3, GP-4, GP-5, N-0, N-0/1, N-1, N-2, N-2A, N-3, RB-2  
 Plastic Colors:  
 Medium Duty: ..... White, Blue, Red, Yellow, Green, Orange and Tan  
 Heavy Duty: ..... White, Red, Blue  
 Approximate Shipping Weights: ..... 9M Packs (medium duty), 34 Lbs; 9M Packs (heavy duty), 36 Lbs