

AUTOMATIC BAG CLOSURE-LABELS

Series T, TF & T-220

Series T and TF labels are 2-3/4" long and 2-3/4" wide and designed for use through Kwik Lok Automatic Bag Closing Machines. The labels are available in three different configurations, shown below. The labels can be custom printed on coated one-side tagboard or a synthetic material.

SEE APPENDIX FOR ADDITIONAL CLOSURE-LABEL PRINTING INFORMATION.

Labels glued to a medium duty closure are manufactured on rolls containing 1,500 labels with 8 rolls per carton (12M). Labels glued to a heavy duty closure are manufactured on rolls containing 1,250 labels with 8 rolls per carton (10M).



SERIES T CLOSURE-LABELS

Series T closure-labels are designed to be used with Kwik Lok's 872 Labelmaster Automatic Bag Closing Machine. The label can be custom printed on both sides. The closure is glued to the back of the label.



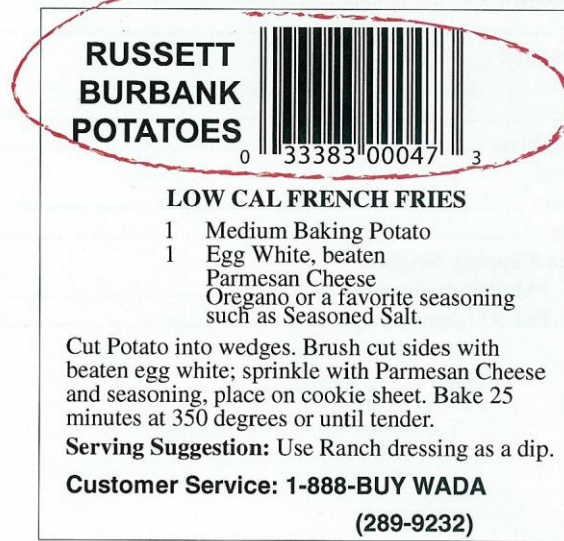
SERIES TF CLOSURE-LABELS

Series TF closure-labels are designed to be used with Kwik Lok's 865 & 893 Ultra Automatic Bag Closing Machine, also the 087 & 088 Semiautomatic Machines. The label is custom printed both on sides. The closure is glued to the front of the label.

THIS AREA PRINTED BY 884 THERMAL PRINTER



Trigger mark - activates 884 Printer



Custom Printed Front

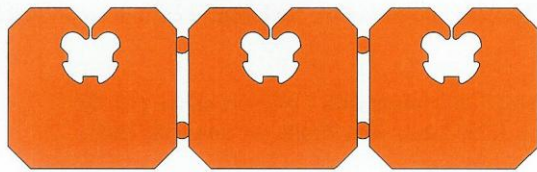
Lower portion of label custom printed

SERIES T-220 CLOSURE-LABELS

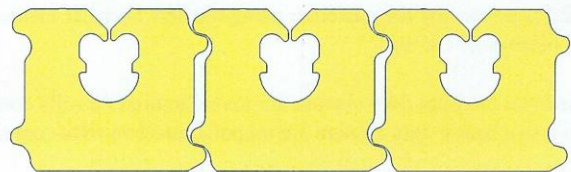
Series T-220 closure-labels are designed to be printed, by the customer, with the 884 Thermal Printer. After printing, the labels are recoiled and can be used in the 865 Automatic Bag Closing Machine, also the 087 & 088 Semiautomatic Machines. The front of the label will face out, away from the package, towards the consumer. A trigger mark is printed on the front to activate the 884 Printer.

AUTOMATIC BAG CLOSURE-LABELS

Series T, TF & T-220

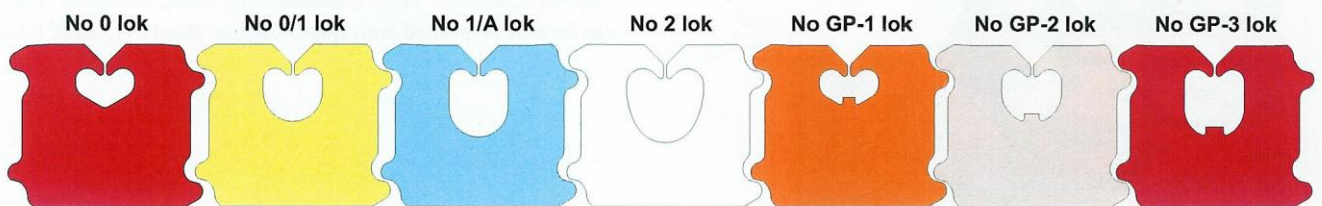


Series J with "I" webbing. Closures are connected by small plastic 'nubs'.



Series J with "NRP" webbing. Closures are connected using a patented 'wing' design.

All lok openings are available with either of the above web designs. All closures are available in either medium duty (0.030" thick) or heavy duty (0.045" thick) plastic.



No 0 lok

No 0/1 lok

No 1/A lok

No 2 lok

No GP-1 lok

No GP-2 lok

No GP-3 lok

No GP-4 lok

No TG-2 lok

No TG-3 lok

No TG-4 lok

No TGR-3 lok

No TGR-4 lok

No N-1 lok

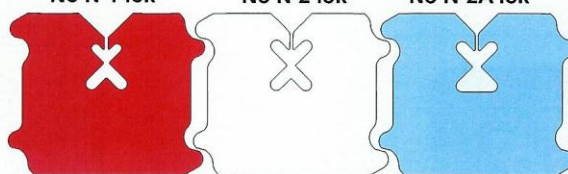
No N-2 lok

No N-2A lok

**MEDIUM DUTY CLOSURES
UP TO 5 LBS
CONTENT WEIGHT**



Medium Duty
0.030"



Heavy duty plastic recommended for net bag openings.

**HEAVY DUTY CLOSURES
UP TO 10 LBS
CONTENT WEIGHT**



Heavy Duty
0.045"

SPECIFICATIONS

Minimum Order Quantity:

Series T, TF: 42,000

Series T-220: 48,000

Label Size: 2-3/4" wide x 2-3/4" wide

Plastic Thickness:

Medium Duty: 0.030"

Heavy Duty: 0.045"

Lok Opening Sizes: 0, 0/1, 1/A, 2, GP-1, GP-2, GP-3, GP-4, TG-3, TG-4, TGR-3, TGR-4, N-1, N-2, N-2A

Plastic Colors:

Medium Duty: White, Red, Blue, Orange, Green, Yellow, Tan

Heavy Duty: White, Blue, Red

Approximate Shipping Weights:

Series T, TF, T-220 (medium duty): 12M Packs, 45 Lbs

Series T, TF, T-220 (heavy duty): 10M Packs, 50 Lbs