

AUTOMATIC BAG CLOSURE-LABELS

Series P, PF & P-200

Series P labels are 2-3/4" long and 7/8" deep and designed for use through Kwik Lok Automatic Bag Closing Machines. The labels are available in three different configurations, shown below. The labels can be custom printed on coated one-side tagboard or a synthetic material.

Labels glued to a medium duty closure are manufactured on rolls containing 2,000 labels with 8 rolls per carton (16M).
Labels glued to a heavy duty closure are manufactured on rolls containing 1,500 labels with 8 rolls per carton (12M).

SEE APPENDIX FOR ADDITIONAL CLOSURE-LABEL PRINTING INFORMATION.

SERIES P CLOSURE-LABELS



Series P closure-labels are designed to be used with Kwik Lok's 872 Labelmaster Automatic Bag Closing Machine. The label can be custom printed on both sides. The closure is glued to the back of the label.

SERIES PF CLOSURE-LABELS



Series PF closure-labels are designed to be used with Kwik Lok's 865 & 893 Automatic Bag Closing Machine, also can be used with the 087 and 088 Semiautomatic Bag Closing Machines. The label is custom printed on both sides. The closure is glued to the front of the label.

SERIES P-200 CLOSURE-LABELS



Custom Printed Front

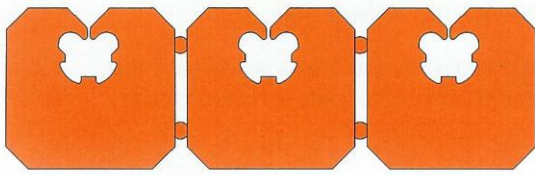
Back Printed by 884 Thermal Printer

Series P-200 closure-labels are designed to be printed, by the customer, with the 884 Thermal Printer. After printing, the labels are recoiled and can be used in the 865 Automatic Bag Closing Machine, also the 087 and 088 Semiautomatic Bag Closing Machines. The front of the label can be custom printed - this side of the label will face out, away from the package, towards the consumer.

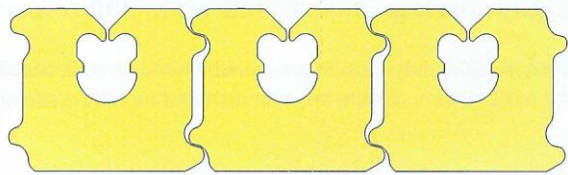
The 884 Print Area is 2-3/16" x 3/4" (Note: The 884 cannot print directly over the closure).

AUTOMATIC BAG CLOSURE-LABELS

Series P, PF & P-200

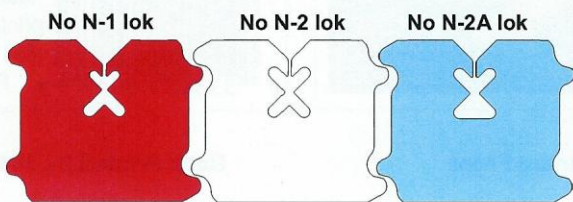
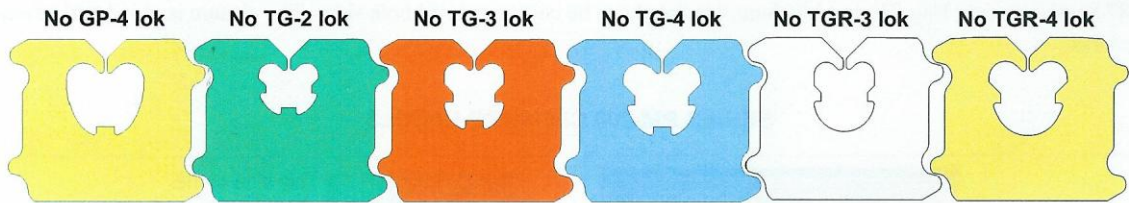
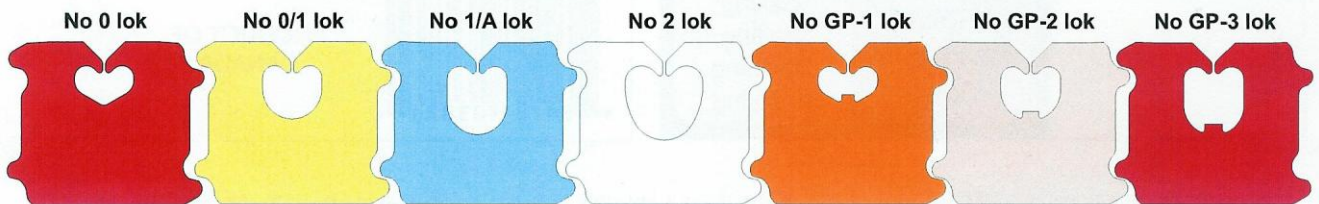


Series J with "I" webbing. Closures are connected by small plastic 'nubs'.



Series J with "NRP" webbing. Closures are connected using a patented 'wing' design.

All lok openings are available with either of the above web designs. All closures are available in either medium duty (0.030" thick) or heavy duty (0.045" thick) plastic.



**MEDIUM DUTY CLOSURES
UP TO 5 LBS
CONTENT WEIGHT**



Medium Duty
0.030"

**HEAVY DUTY CLOSURES
UP TO 10 LBS
CONTENT WEIGHT**



Heavy Duty
0.045"

Heavy duty plastic recommended for net bag openings.

SPECIFICATIONS

Minimum Order Quantity:	
Series P, PF:	42,000
Series P-200:	42,000
Label Size:	2-3/4" wide x 7/8" deep
Plastic Thickness:	
Medium Duty:	0.030"
Heavy Duty:	0.045"
Lok Opening Sizes:	0, 0/1, 1/A, 2, GP-1, GP-2, GP-3, GP-4, TG-2, TG-3, TG-4, TGR-3, TGR-4, N-1, N-2, N-2A
Plastic Colors:	
Medium Duty:	White, Red, Blue, Orange, Green, Yellow, Tan
Heavy Duty:	White, Blue, Red
Approximate Shipping Weights:	
Series P, PF, P-200 (medium duty):	16M Packs, 30 Lbs
Series P, PF, P-200 (heavy duty):	12M Packs, 34 Lbs